

Energy efficient supply chain for a resources efficient food product

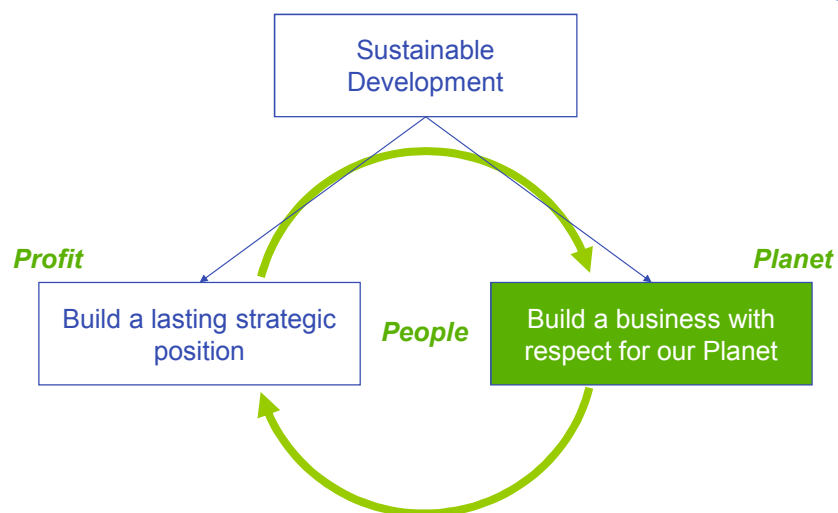
e+ less energy
more efficiency
Effective solutions for efficient business
www.energyefficiency.be

22.04.2009
VBO FORUM FEB
BRUSSELS EXPO

VBO FEB
Verbond van
Belgische
Ondernemingen | Fédération des
Entreprises de
Belgique

Ambition - Leadership - Professionalism - Respect - Ownership

Sustainable Development at Alpro: People, Profit and Planet hand-in-hand



Alpro Soya: Energy efficient production for a resources efficient food product



1 Energy efficient supply chain ...

- A myriad of energy reduction initiatives ...
- ... both in the field and in the mind
- Target for CO2 neutral factories by 2020

2 ... for a resources efficient food product

- Vegetal food vs animal food requires less natural resources
 - Less land
 - Less water
 - Less energy (e.g. synthetic fertilizer)

1 Different initiatives to scale down energy usage and CO2 footprint



1. Limit energy use and CO2 emissions, e.g.:

- Use of most energy-efficient technology
- In-bound and outbound transport
- More ecological car fleet
- Awareness campaigns

2. Reduce use of fossil energy, e.g.:

- Biogas-production (WWT)
- Solar panels/-cells
- Windmill under investigation
- Buying Green Power

3. Compensate CO2 emissions.:

- Own soy fields
- Tree-planting / conservation projects



1 A few examples of energy use limitation
Inbound and outbound transport



Barge transport instead of road transport



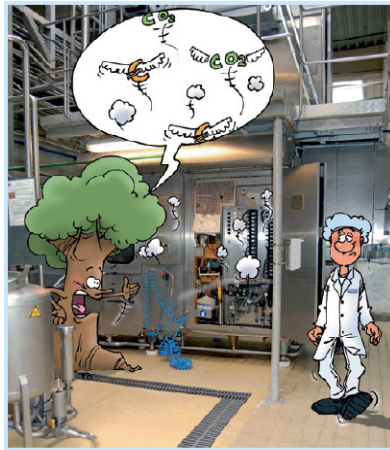
Double stacking for transport

INI/INI

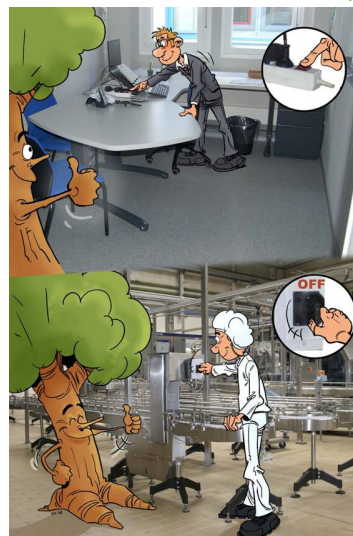
Ambition - Leadership - Professionalism - Respect - Ownership

- 5 -

1 A few examples of energy use limitation
Awareness campaigns



Awareness campaigns in the factories



INI/INI

Ambition - Leadership - Professionalism - Respect - Ownership

- 6 -

1 A few examples of fossil energy use reduction

Biogas production



Biogas production out of waste water treatment

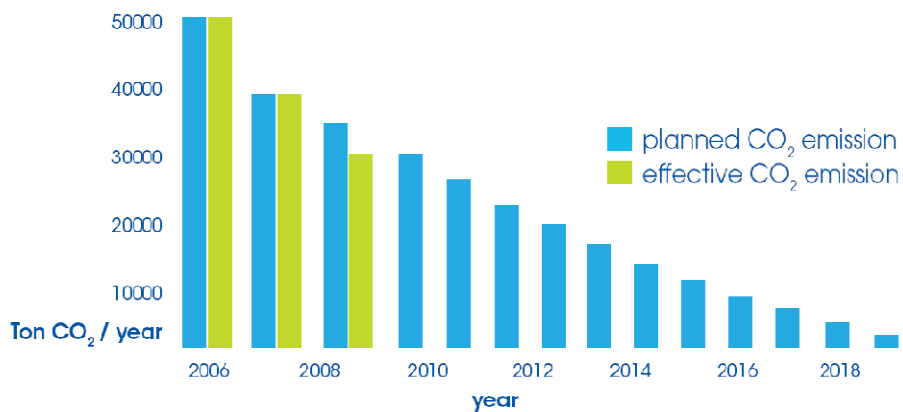


INI/INI

Ambition - Leadership - Professionalism - Respect - Ownership

- 7 -

1 Well on our way to reach CO₂ neutrality by 2020



INI/INI

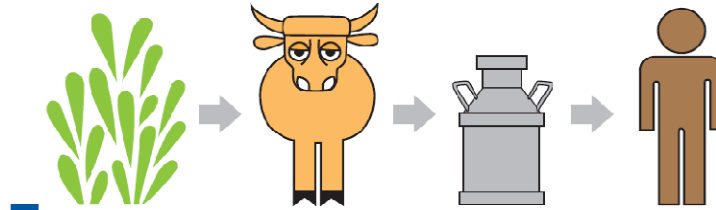
Ambition - Leadership - Professionalism - Respect - Ownership

- 8 -

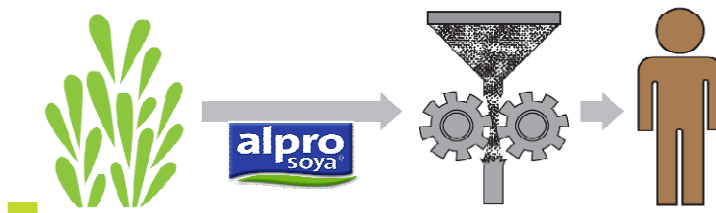
2 Resources efficient food by by-passing the cow ...



Cow milk production process



Soy milk production process...by-passing the cow



INI/INI

Ambition - Leadership - Professionalism - Respect - Ownership

- 9 -

2 ... resulting in soy outperforming dairy and meat on all key Sustainable Development food KPIs



		KPI	Soy vs Dairy and Meat
NATURAL RESOURCES	Land	# people fed / ha	3 vs 1 6 vs 1
	Water	Lit / kg product	1 vs 8 1 vs 8
	Air	CO ₂ / kg product	1 vs 3 1 vs 8
	Energy		

INI/INI

Ambition - Leadership - Professionalism - Respect - Ownership

- 10 -

No words ... but action!



The challenges of our planet ...

... addressed by Alpro soya



Ambition - Leadership - Professionalism - Respect - Ownership

A final thought ...



*Socialism collapsed because it didn't let
prices tell the economic truth;*

*Capitalism could collapse because it doesn't let
prices tell the ecological truth.*

Oysten Dahle, Vice President Exxon Norway

INI/INI

Ambition - Leadership - Professionalism - Respect - Ownership

- 12 -